

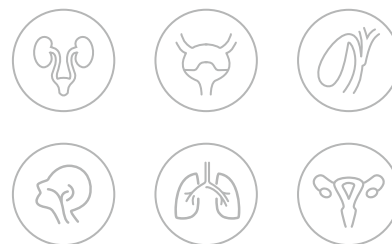


VISION IN HEALTHCARE

**BESDATA**



# Endoscopy System



No:BESDATA-SDR-0004 Rev:A/0

# CONTENTS

- Medical Image Processor With Monitor
- Single Use Ureteroscope
- Single Use Cystoscope
- Single use flexible choledochoscope
- Single use flexible Rhinolaryngoscope
- Single use flexible Bronchoscope
- Single use hysteroscope

## MIP1002

### Medical Image Processor With Monitor

- 1280x800 high resolution for clear image display
- Compatible with BESDATA's endoscope system
- AV, HDMI, SDI, DVI, USB 3.0 output interfaces to connect to existing hospital display devices
- Easily to take pictures and create medical records, adjust brightness and color level



Touch Screen



Scope Button  
customized



Strong  
Compatibility



Patient Profiles  
Management



#### Product Parameters

Model	MIP1002
Screen Size	10.1inch
Resolution	1280X800
Storage capacity	32 GB
Video input	10/14 pin lemo plug
Video output	AV,HDMI, SDI, DVI,USB3.0
Recording Format	JPG for photograph, MP4 for video
Function	Freeze, Snap, Recording, USB storage, White balance, Zoom in/Zoom out
Dimensions	260mm*210mm*50mm



## URETEROSCOPE

### Single Use Ureteroscope

Disposable ureteroscope has excellent performance, no repair and maintenance cost, no disinfection cost, hygienic and safe, and avoids cross-infection.

#### Ergonomic

Effectively relieve fatigue during surgery

#### 275°

275° excellent deflection in both directions

#### True 1:1

1:1 implementation of hand movements through to the distal end

#### Luer Lock

Included in every scope

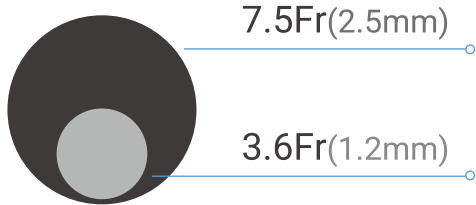




## 7.5Fr Ultra Slim Insertion Tube

Compatible well with adjustable suction access sheath, bigger space to improve suction efficiency, more irrigation flow per time.

7.5Fr



**Bullet Design**  
Drilling into the ureter is easier



**Optimized Graphics**  
CMOS+2LED image technology

### Product Parameters

Model	OD	ID	Working Length	Angulation Range
UR-F1	2.8mm	1.2mm	650mm	U275°/D275°
UR-F2	2.5mm	1.2mm	650mm	U275°/D275°



## CYSTOSCOPE

### Single Use Cystoscope

Every procedure with a new cystoscope offer easier cystoscopy both for doctor and patient.

#### HD image

Crystal clear images to identify anatomical structures



Support Customized  
Button Function



#### 210°Up/210°Down

Wider Angle, no blind angle  
in bladder and urethra

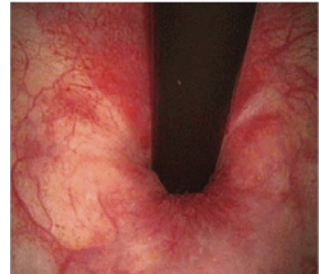
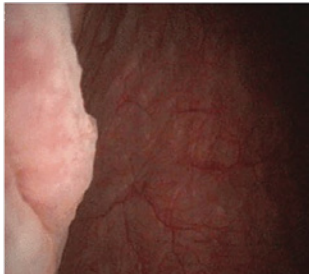
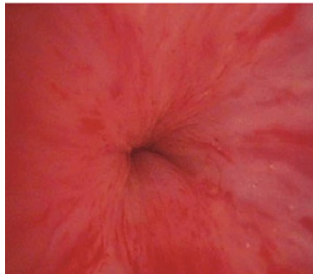


## 2.0mm Working Channel

Compatible with a variety of surgical instruments



## Clearly present intravesical images



### Product Parameters

Model	OD	ID	Working Length	Angulation Range
CY-F1	5.2mm	2.0mm	380mm	U210°/D210°



## CHOLEDOCHOSCOPE

### Single use flexible choledochoscope

Single-use, sterile designed to access and visualize the bile ducts. Its flexible design allows navigation through the biliary system to diagnose and treat conditions like stones, strictures, or tumors.



**Efficient  
stone removal**



**Compatible  
Instruments**



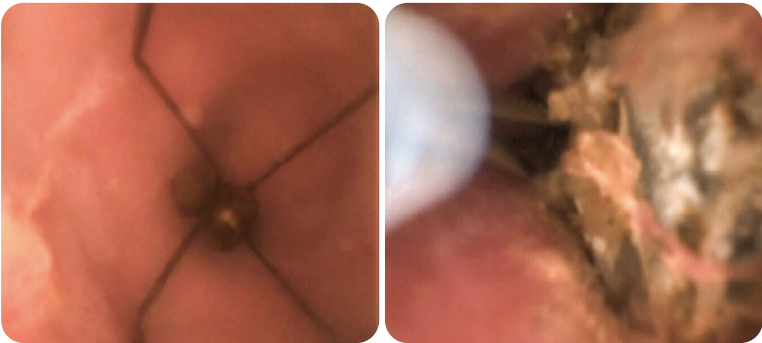
**U180°/D130°**

Support Customized  
Button Function



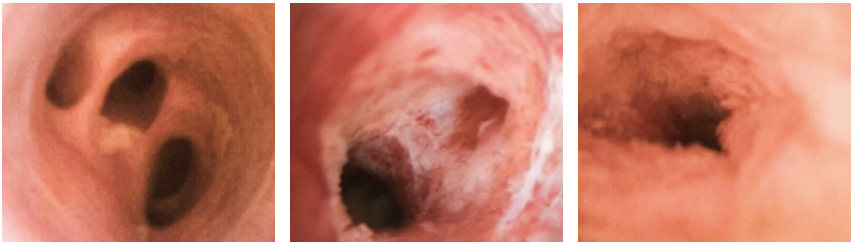
## 2.0mm Working Channel

Compatible with a wide range of instruments



## Compatible with HD monitor MIP1002

High-quality image , portable diagnostic solutions



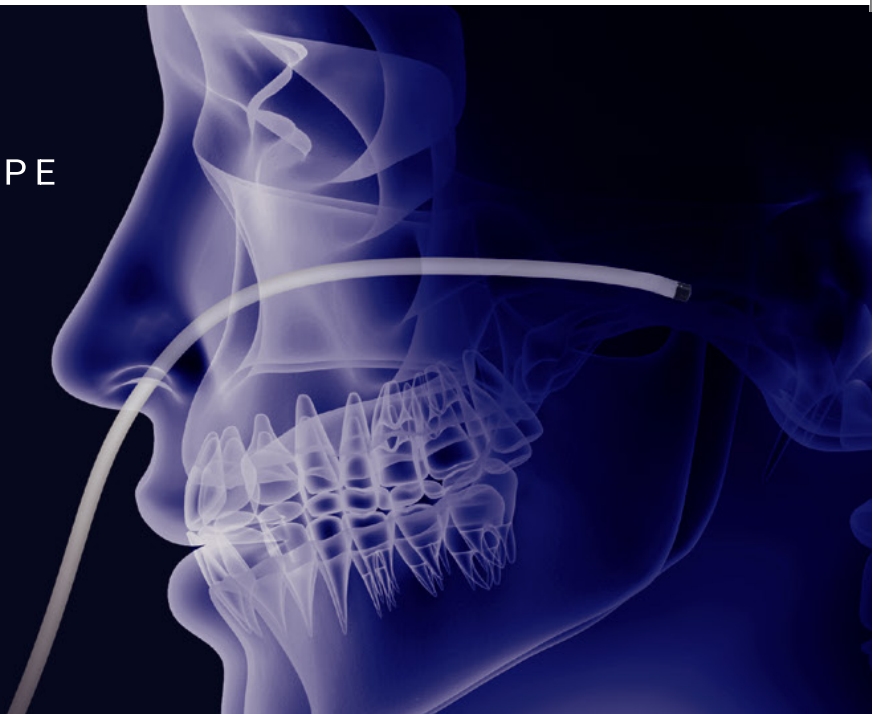
### Product Parameters

Model	OD	ID	Working Length	Angulation Range
CH-F1	5.2mm	2.0mm	380mm	U180°/D130°



## RHINOLARYNGOSCOPE

### Single use flexible rhinolaryngoscope



### Efficient ENT Examination And Diagnosis

Single use flexible rhinolaryngoscope are safer and hygienic, can avoid cross-infection, and convenient operation can improve the efficiency of examination and diagnosis.

✓ HD Image

✓ Photo/Video Recording

✓ Ergonomic Design

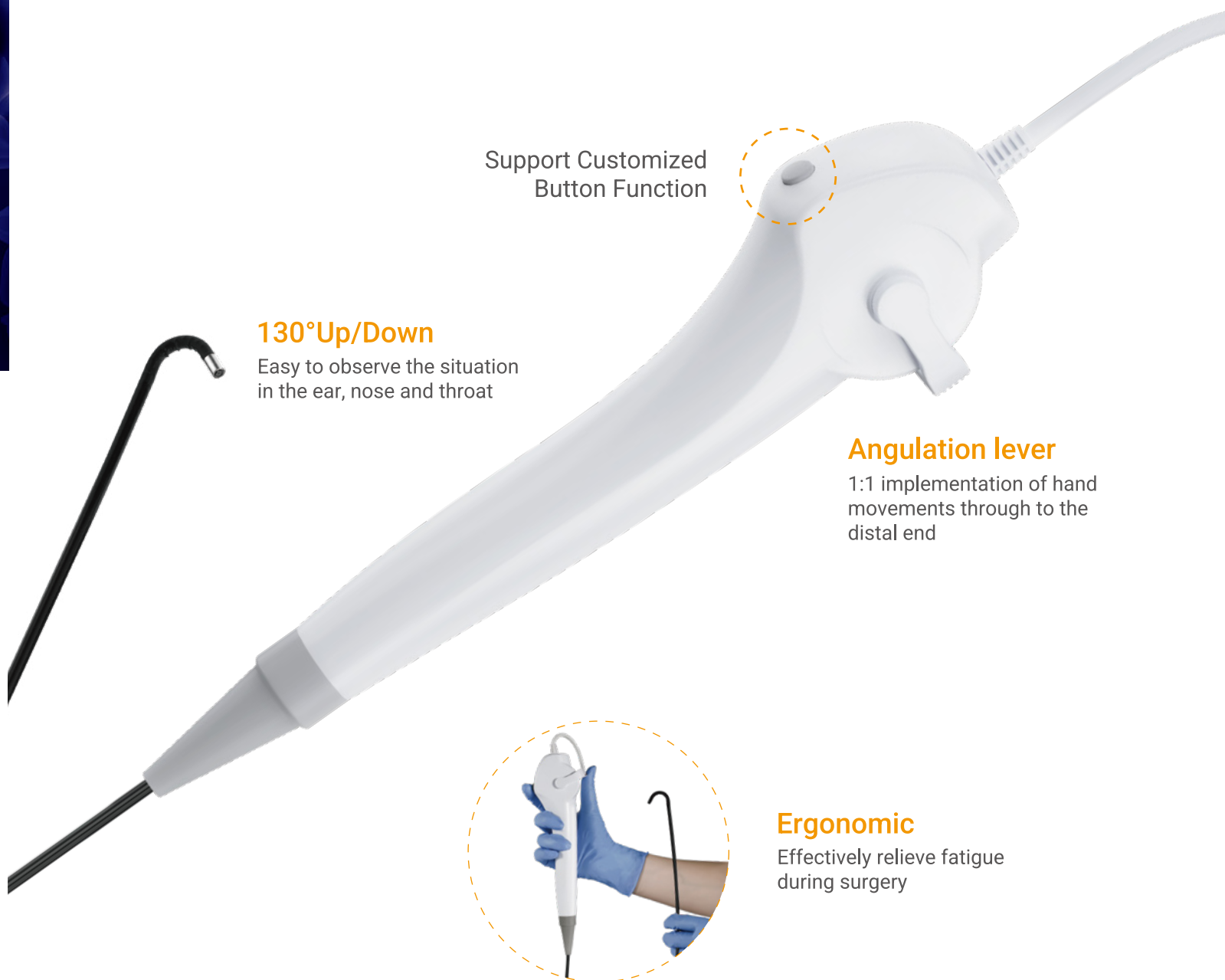
✓ Easy Handling

#### Convenient ENT solutions

- It can be connected to HD 10-inch Monitor with clear images, doctors can clearly see the lesion area.
- Portable and handheld, meet the needs of clinic visits







Support Customized  
Button Function

### 130° Up/Down

Easy to observe the situation  
in the ear, nose and throat

### Angulation lever

1:1 implementation of hand  
movements through to the  
distal end

### Ergonomic

Effectively relieve fatigue  
during surgery

## Product Parameters

Model	OD	ID	Working Length	Angulation Range
RL-BS004	3.5mm	/	330mm	U130°/D130°
RL-BS005	4.0mm	2.0mm	330mm	U130°/D130°
RL-BS006	2.8mm	1.2mm	330mm	U130°/D130°
RL-BS007	2.8mm	/	330mm	U130°/D130°



## BRONCHOSCOPE

### Single use flexible Bronchoscope

No risk of cross-contamination ,Cost effective, High degree of usability, Smooth and easy navigation,Cristal clear images make easy identification of lung anatomy and navigation in the bronchial tree.

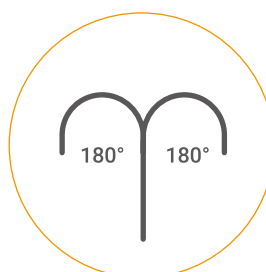


**Suction Button  
& Suction Connector**



**Working Channel**

Compatible with various endotherapy instruments like biopsy forceps and cytology brushes

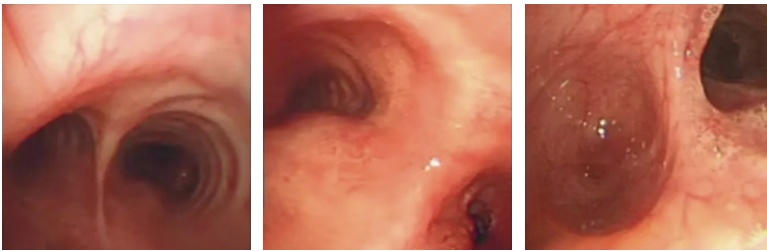


**180°Up/180°Down**

Sensitive adjustment for easy access to the bronchial tree

## CMOS+LED Technology

High Image Quality



## Compatible with HD monitor MIP1002

Portable HD Image, Easier Access to a wide range of procedures.



## Product Parameters

Model	OD	ID	Working Length	Angulation Range	Application
BR-F1	2.8mm	1.2mm	600mm	U180°/D130°	Intubation, the placement and control of double lumen tubes and bronchial blockers in the OR.
BR-F2	3.8mm	/	600mm	U180°/D130°	Intubation and observation
BR-F3	5.2mm	2.2mm	600mm	U180°/D130°	Intubation and bedside bronchoscopy including BAL & PDT procedures.
BR-F4	5.8mm	2.8mm	600mm	U180°/D130°	A working channel that is ideal for a wide range of bronchoscopy procedures, including BAL & BW procedures.



## HYSTEROSCOPE

### Single use hysteroscope

Precisely identify disease states in any room. Swift diagnosis for abnormal uterine bleeding (AUB), polyps, cancer, fibroids and more.



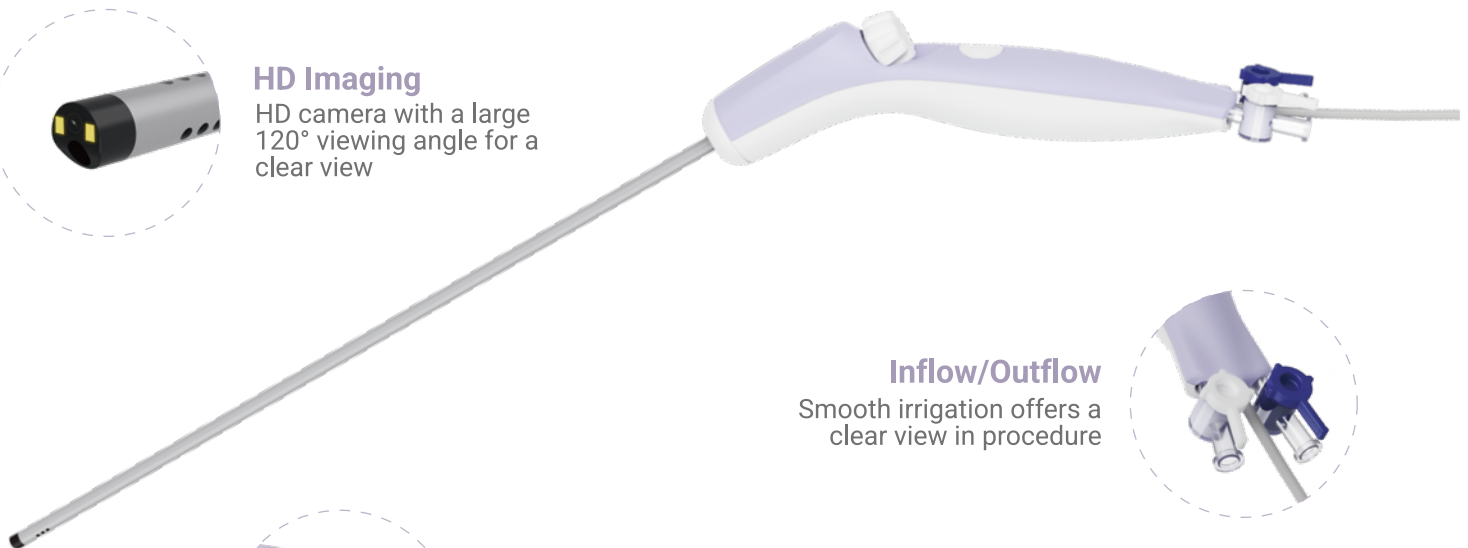
#### 2.2mm Working Channel

Compatible with 1.8mm(5.5Fr)  
instruments



#### HD Imaging

HD camera with a large  
120° viewing angle for a  
clear view



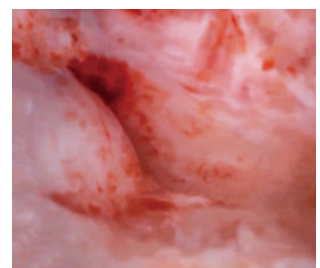
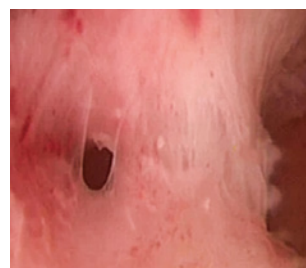
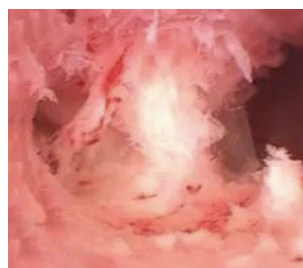
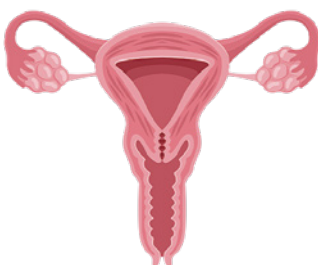
#### Inflow/Outflow

Smooth irrigation offers a  
clear view in procedure



#### 120g super lightweight design

Reducing fatigue in long  
hysteroscopy procedures



### 4.2/5.2mm Optional

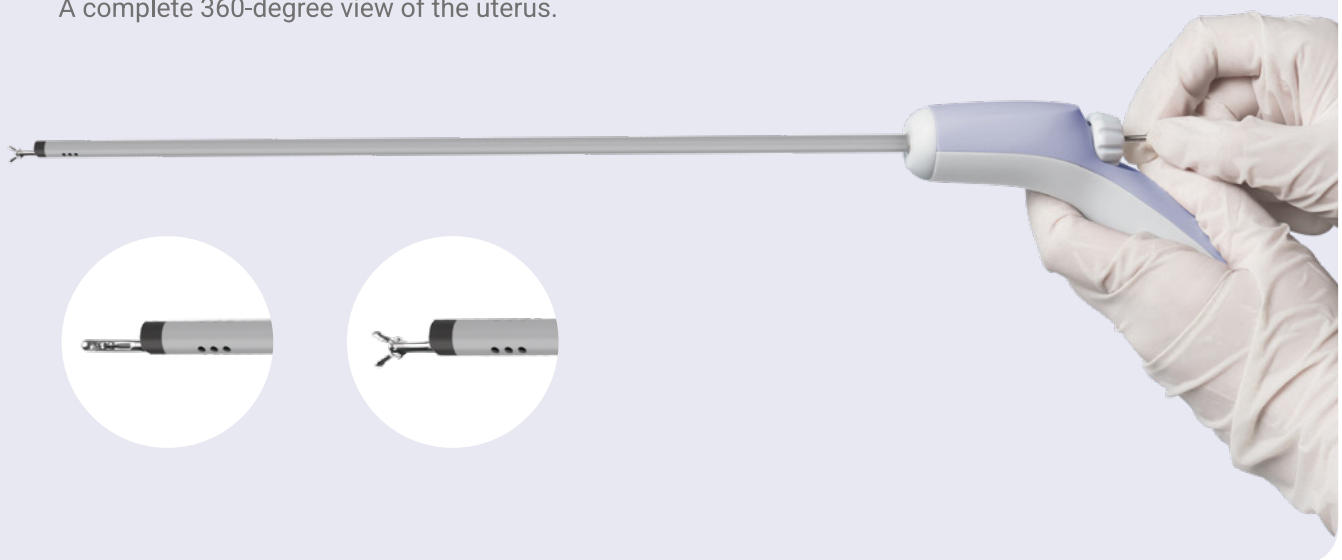
4.2mm slim diameter requiring no cervical dilation or anaesthesia.

### 2.2mm(6.6Fr) working channel

Compatible with most hysperoscopic instruments for operative procedures.

### HD Imaging

A complete 360-degree view of the uterus.



### Compatible with HD monitor MIP1002

Easier access to both office swift diagnosis and operation room use.



### Product Parameters


Model	OD	ID	Working Length	Field of View
HY-G1	5.5mm	2.2mm	330mm	120°
HY-G2	4.2mm	2.2mm	330mm	120°




**SHENZHEN BESDATA TECHNOLOGY CO.,LTD**

503, Building #2, Xinnantian Industrial Park, No. 3179, Danzi Avenue, Laokeng Community, Longtian Street,  
Pingshan District, Shenzhen, China.

 +86-755-84416070

 [support@besdatatech.com](mailto:support@besdatatech.com)

 [www.besdatatech.com](http://www.besdatatech.com)