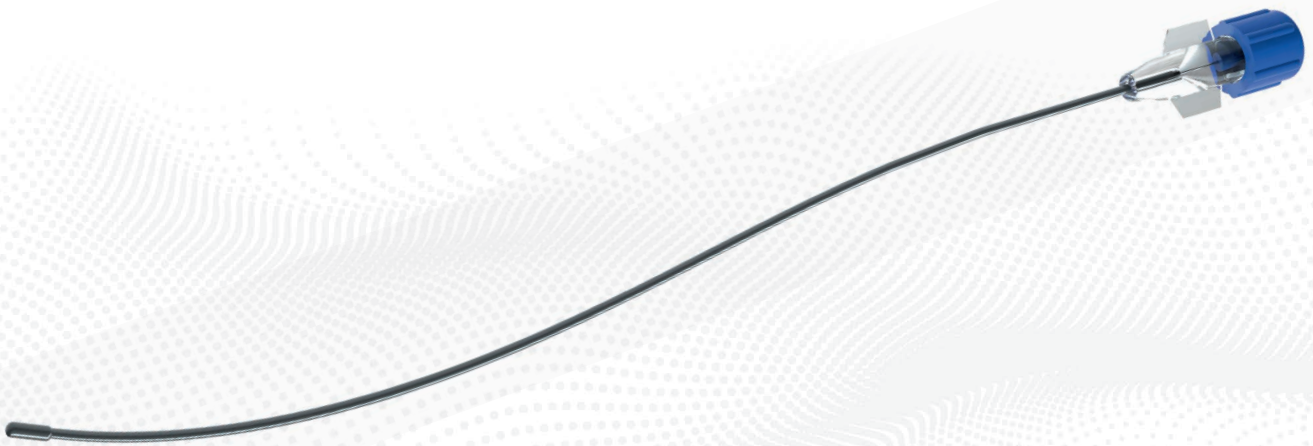




**SPIGGLE & THEIS**  
Medizintechnik

# TubaClean®

Probing and flushing catheter for the Tuba Eustachii



Quality you can rely on

**30**  
Years  
SPIGGLE & THEIS  
1994 - 2024



Probing and flushing catheter  
for the Tuba Eustachii



# TubaClean®

---

The **TubaClean®** catheter was developed to probe and flush the Eustachian Tube in the course of middle ear surgery.

The catheter can be used during various surgical interventions at the middle ear (tympanoplasty I to III or tympanoscopy) to probe the Eustachian Tube via tympanal side for blockages or to flush it with a sterile liquid.



## The probing and flushing catheter for the Eustachian tube



Prof. Dr. med. Götz Lehnerdt, Chief Doctor,  
Cellitinnen-Krankenhaus St. Petrus,  
Wuppertal, Germany

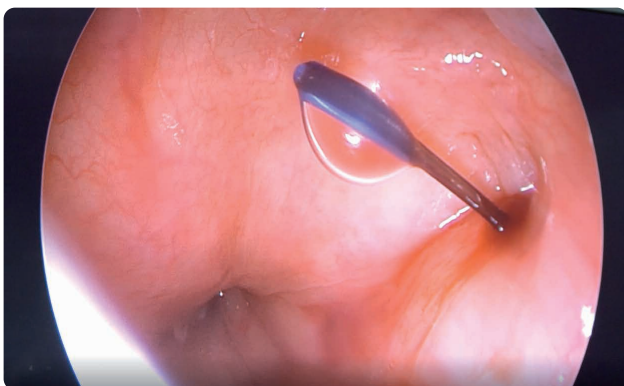
» This catheter gives us surgeons an option for probing and flushing the Tuba Eustachii in an atraumatic way from the middle ear during surgery. «

Chronic ventilation problems may result in retraction, cholesteatoma, or not-healing eardrum defects. Particularly in children, tympanic effusion, often with a mucous discharge (so-called “glue ear”), may also occur.

As many users of balloon dilation have described, such viscous secretion is frequently found within the Tuba Eustachii as well. In analogy, this is referred to using the term “glue tube”.

### Indications

- Tuba Eustachii dysfunction
- Mucous otitis media
- Chronic mesotympanic otitis media with possible eardrum defects
- Chronic epitympanic otitis media (possibly in connection with cholesteatoma development)
- Detritus in the Eustachian tube e.g. after middle ear surgery
- Cleaning after drilling work at the middle ear



Distal catheter portion (olive shape) in the nasopharynx

## TubaClean®

### Advantages:

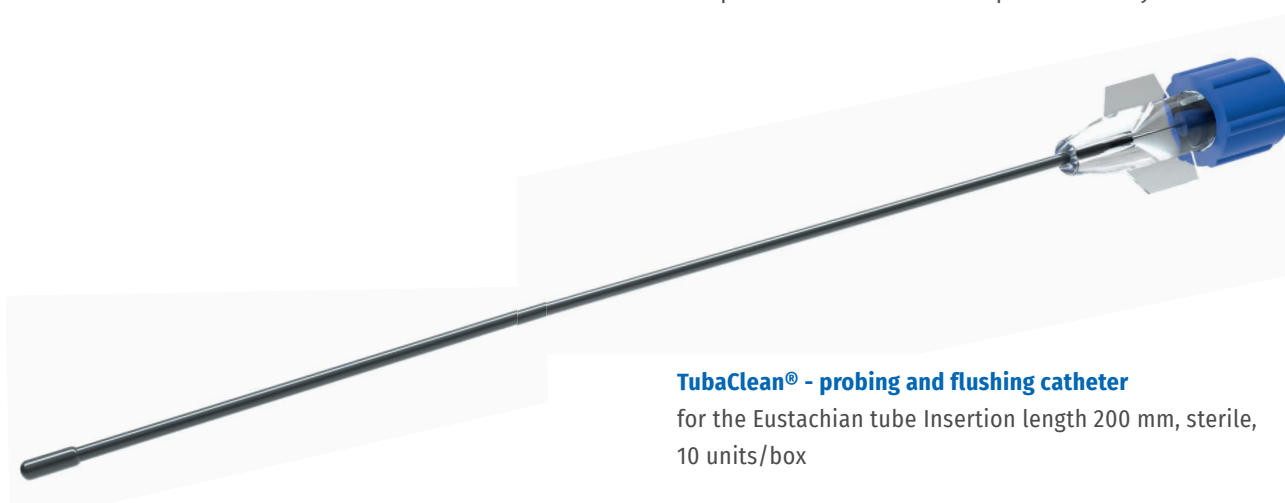
- Checking the Tuba Eustachii for blockage from the situs of the ear
- Cleaning after drilling work at the middle ear
- Removal of mucus from the Tuba Eustachii
- Enhanced insight into the middle ear with surgical measures in the course of tympanoplasty I to III or tympanoscopy

### Procedure

- Localising the tympanal tubal ostium
- The catheter is pushed forward into the lumen of the Tuba Eustachii
- After pushing forward for about 15 mm, the mandrel is removed to allow easier progress beyond the tubal isthmus
- The catheter is slowly retracted while at the same time flushing the tube or administering cortisone

### Features & Benefits

- Atraumatic olive-shaped tip prevents puncturing of the mucosa
- High stiffness when inserting the catheter due to an internal mandrel
- After removing the mandrel, there is high flexibility so that the catheter can be optimally pushed through the curves and isthmus of the Tuba Eustachii
- A Luer-Lock adapter allows easy and safe administration of liquids
- Improved ventilation enables quicker recovery



olive-shaped tip

### TubaClean® - probing and flushing catheter

for the Eustachian tube Insertion length 200 mm, sterile, 10 units/box

**2080-1200006**



### **Catheter application**

- Localising the tympanic tubal ostium
- The catheter is advanced forward into the lumen of the Tuba Eustachii
- Insertion of the catheter with insertion forceps (10-512-15)
- The catheter is advanced forward without resistance
- After advancing forward for about 10-15 mm (or when met slight resistance), the mandrel is removed to allow easier progress beyond the tubal isthmus
- The catheter is advanced forward into the nasopharyngeal zone
- The catheter is slowly retracted while at the same time flushing the tube

