

XCAT^{IQ}™

truly portable CT

space

Dimensions	32 W x 47 L x 60 H in
Weight	472 lbs
Effective Bore Size	25 in diameter
Gantry Rotation	360 degrees

power

Line Voltage	~120V
Line Frequency	50-60 Hz
Line Current	5 A standby
Peak Current	20 A max

components

Focal Spot Size	0.6 mm
kVp mA Range	120 - 140 kVp
mA Range	10 - 15 mA
Panel	Dynamic
Pixel Pitch	194 μ m
Frame Rates	10 - 30 fps

protocol

Brain Scanning	With hard and soft tissue imaging
Field-of-view	22 x 13 cm
Voxel Size	Adjustable, typically from 0.2 - 0.8 mm depending on selected protocol



XCAT^{IQ}™

S
P
E
C
I
F
I
C
A
T
I
O
N
S

XORAN[®]

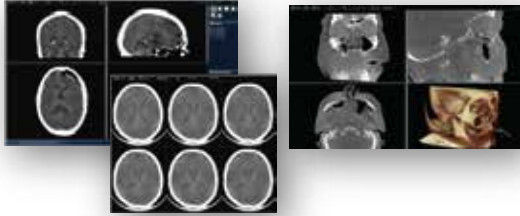
800.709.6726



xorantech.com

XCAT^{IQ}™

truly portable CT



turns on a dime

< 4' footprint with zero degree turning
maneuvers tight spaces with easy storage

brain scanning with hard and soft
tissue imaging
displayed on the built-in monitor



© M.Dach Uni Ulm HNO



effective
bore 25"
diameter
clears
shoulders &
Xoran head
holders



line voltage ~120V
plugs into standard
wall outlet with
battery backup

full 360° rotation
more data = better data

XCAT^{IQ}

S
P
E
C
I
F
I
C
A
T
I
O
N
S

XORAN[®]

800.709.6726



xorantech.com

60238-01-2019